



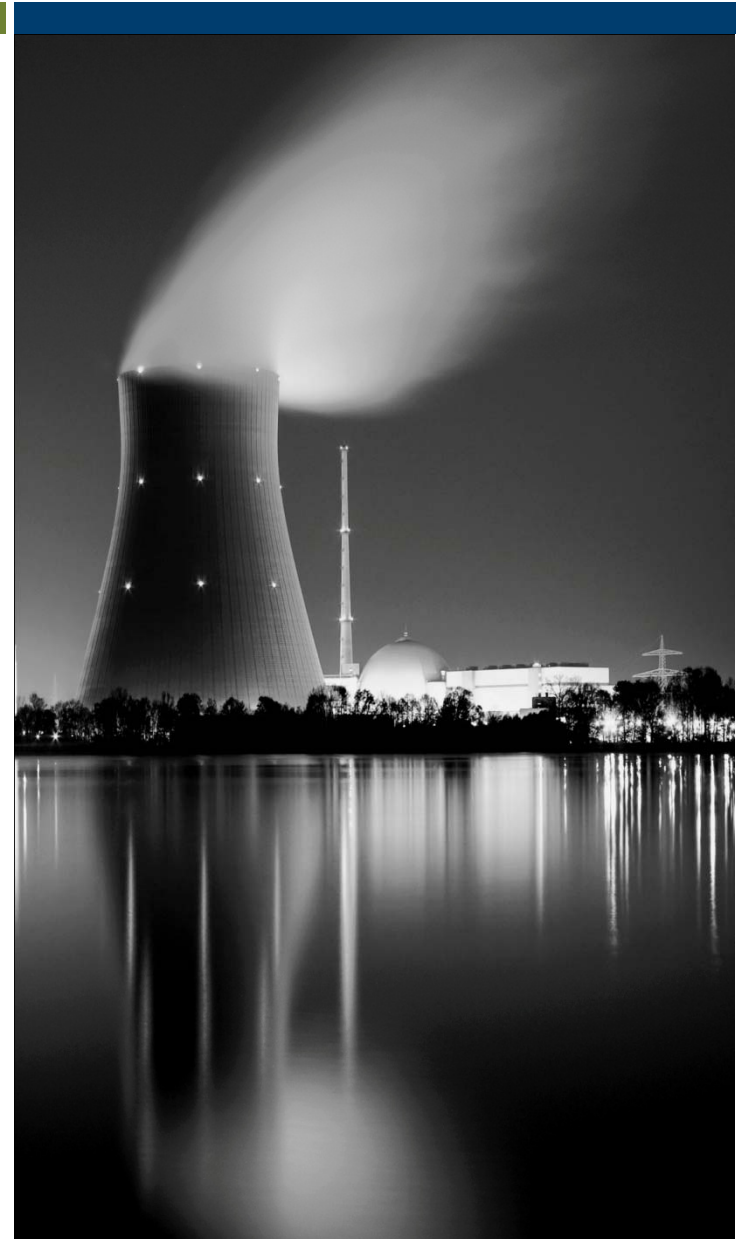
NDT Fund Balances, Annual Contributions and Decommissioning Cost Estimates Updated as of December 31, 2010.



Summary	3
Investor-Owned Utilities	5
Public Power Utilities	7
Recent Data	9



- As of December 31, 2010, 29 investor-owned and 28 public power utilities (excluding municipalities with small shares) had an ownership interest in 104 nuclear plants. The number of utilities with an ownership interest has declined substantially from over 80 to less than 60 due mostly to mergers/acquisitions and the sale of nuclear generating facilities.
- As of December 31, 2010, nuclear decommissioning funds totaled approximately \$45.2 billion, an increase of about \$4.1 billion, or 9.9%, from a year earlier. The \$45.2 billion was approximately 29.5% higher than the \$34.9 billion at the end of 2008, 3.2% higher than the 2007 total and 8.7% higher than the 2006 total. Contributions to NDT funds totaled \$486 million in 2010, an increase of \$33 million, or 7.3%, from the \$453 million contributed in 2009.



How to Read the Nuclear Decommissioning Funding Study



- Our NDT Funding Status Study is divided into two main parts: (1) investor-owned utilities (2) public power utilities. Within each section, utilities with ownership interest are listed in alphabetical order. The first column provides the range of the years of license expiration for each unit owned along with the average years to expiration in brackets. The decommissioning cost estimate, NDT fund balance and annual contributions were collected from three sources-- company 10-K filings with the SEC, company decommissioning report filings with the NRC in accordance with 10 CFR 50.75 and company annual reports.
- The cost estimate of decommissioning is based on either a site-specific study or the NRC minimum cost formula. In order to make the data comparable, we have calculated a "pro-forma" decommissioning cost estimate, which is the higher of the company cost estimate of decommissioning or \$680/KW. The \$680/KW was arrived at by taking the average cost per KW reported for all Investor-Owned Utilities.
- The average years until license expiration weights each plant's license by its percent of the total megawatts owned by that particular utility and takes into account license extensions granted by the NRC as of 12-31-10.

Investor-Owned Utilities



Company	Lic. Exp. [Avg. Yrs]	MW Nuclear Capacity	Decommissioning Cost Estimate (\$MM)			12/31/2010 Fund Balance	Annual Contribution (\$MM)
			Co. Est.	Amt/KW	Co. or \$680/KW	(\$MM)	
1 Ameren	2024 [14]	1,190	\$694	\$583	\$809	\$337	\$7
2 American Electric Power	2034-2037 [26]	2,069	\$1,249	\$604	\$1,407	\$1,208	\$14
3 Central Vermont Public Service	2045 [35]	20	\$8	\$417	\$14	\$6	\$0
4 Constellation Energy	2029-2046 [26]	3,874	\$2,363	\$610	\$2,634	\$1,386	\$0
5 Detroit Edison ⁽¹⁾	2025 [15]	1,122	\$1,300	\$1,159	\$1,300	\$910	\$33
6 Dominion Resources ⁽²⁾	2032-2045 [27]	6,331	\$4,630	\$731	\$4,630	\$2,897	\$4
7 Duke Energy	2033-2043 [27]	5,173	\$3,000	\$580	\$3,518	\$2,014	\$48
8 El Paso Electric	2024-2027 [15]	623	\$324	\$521	\$424	\$154	\$8
9 Entergy ⁽³⁾	2012-2038 [14]	8,234	\$5,290	\$642	\$5,599	\$3,592	\$27
10 Exelon ⁽⁴⁾	2016-2039 [17]	16,929	\$10,151	\$600	\$11,512	\$6,038	\$27
11 First Energy ⁽⁵⁾	2034-2036 [21]	4,647	\$2,881	\$620	\$3,160	\$1,973	\$10
12 FPL Group ⁽⁶⁾	2034-2043 [23]	5,470	\$4,100	\$750	\$4,100	\$3,617	\$0
13 Great Plains Energy	2045 [34]	545	\$279	\$512	\$371	\$129	\$4
14 MidAmerican Energy	2032 [22]	434	\$298	\$687	\$298	\$295	\$2
15 NRG Energy - NRG South Texas LP	2027-2028 [17]	1,126	\$651	\$578	\$766	\$412	\$82
16 Pacific G&E ⁽⁷⁾	2024-2025 [14]	2,303	\$2,300	\$999	\$2,300	\$2,194	\$51
17 Pinnacle West	2024-2027 [15]	1,147	\$598	\$521	\$780	\$470	\$24
18 PPL Corp.	2042-2044 [32]	2,093	\$1,131	\$540	\$1,423	\$618	\$0
19 Progress Energy ⁽⁸⁾	2016-2046 [22]	3,770	\$3,740	\$992	\$3,740	\$1,571	\$24
20 PS Enterprise Group	2016-2034 [15]	3,612	\$2,100	\$581	\$2,456	\$1,363	\$0
21 PS New Mexico	2024-2027 [15]	402	\$209	\$521	\$273	\$157	\$3
22 San Diego G&E ⁽⁹⁾	2022 [12]	430	\$732	\$1,702	\$732	\$664	\$9
23 Scana Corp.	2042 [31]	644	\$451	\$700	\$451	\$76	\$3
24 Southern Cal Edison ⁽⁹⁾	2022-2027 [13]	2,237	\$2,111	\$944	\$2,111	\$3,049	\$28
25 Southern Company ⁽¹⁰⁾	2034-2049 [31]	3,644	\$2,332	\$640	\$2,478	\$1,143	\$3
26 Energy Future Holdings	2030-2033 [21]	2,367	\$1,255	\$530	\$1,610	\$536	\$15
27 Westar Energy	2045 [34]	545	\$279	\$512	\$371	\$127	\$3
28 Xcel Energy	2013-2030 [9]	1,668	\$2,444	\$1,465	\$2,444	\$1,351	\$1
29 ZionSolutions ⁽¹¹⁾	[0]	2,080	\$756	\$363	N.A.	\$805	\$0
IOU Total		84,729	57,657	\$680	\$61,709	\$39,091	\$429

Nuclear 

Decommissioning
Funding Study 2010

Disclaimer: All information is based on reliable sources, however accuracy and completeness of data cannot be guaranteed. Source information is contained on pg 4.





- (1) Excludes Fermi Unit 1.
- (2) Includes 641 MW Millstone #1, which has been shut down permanently and is assumed to be decommissioned upon the license expiration of Millstone #2 in July 2035.
- (3) Excludes Indian Point 3 and Fitzpatrick (trust funds retained by New York Power Authority).
- (4) Includes 210 MW Dresden #1, which has been shut down permanently and is assumed to be decommissioned upon the license expiration of Dresden #2 in January 2029.
- (5) Includes 786 MW TMI #2, which has been shut down permanently and is assumed to be decommissioned upon the license expiration of TMI #1 in April 2034. TMI #1 is owned and operated by Exelon.
- (6) FPL in the process of upgrading base load capacity at its existing St. Lucie & Turkey Point nuclear units by 400 MW. These upgrades are projected to be in service in 2012. The 5,470 MW excludes this 400 MW.
- (7) Includes 63 MW Humboldt Bay #3, which has been shut down permanently and is in the process of being decommissioned over the period 2009-2015.
- (8) Excludes 6.6% interest (57 MW) in Crystal River #3 representing minority ownership by 8 municipalities (Orlando Utilities Commission's 1.6% represented within Public Utilities).
- (9) Excludes SONGS #1, which is nearing completion of decommissioning. Fund balance for San Diego G&E excludes \$92 million NDT for SONGS #1. Fund Balance for Southern Cal Edison excludes \$276 million NDT for SONGS #1.
- (10) Fund balance includes \$24 million of internal reserve.
- (11) 2,080 MW Zion Units #1 and #2, which have been shut down permanently, were acquired from Exelon in September 2010 and are scheduled for decommissioning 2010-2016. N.A. (not applicable) notation due to nature of decommissioning process being undertaken by Zion Solutions.

Public Power Utilities



Company	Lic. Exp. [Avg. Yrs]	MW Nuclear Capacity	Decommissioning Cost Estimate (\$MM)			12/31/2010	Annual Contribution (\$MM)
			Co. Est.	Amt/KW	Co. or \$680/KW	Fund Balance (\$MM)	
1 Allegheny Electric Co-op	2042-2044 [32]	233	\$142	\$611	\$158	\$73	\$2
2 Central Iowa Power Cooperative	⁽¹⁾ 2034 [23]	116	\$111	\$954	\$111	\$72	\$1
3 City of Austin	⁽²⁾ 2027-2028 [17]	410	\$221	\$539	\$279	\$168	\$5
4 City of San Antonio	2027-2028 [17]	1,024	\$552	\$539	\$696	\$402	\$0
5 Corn Belt Power Co-op	⁽³⁾ 2014 [5]	58	\$76	\$1,314	\$76	\$32	\$1
6 Energy Northwest	⁽⁴⁾ 2023 [13]	1,131	\$984	\$870	\$984	\$155	\$1
7 Florida Municipal Power Agency	⁽²⁾ 2043 [32]	74	\$331	\$4,473	\$331	\$52	\$3
10 KEPCO	2045 [34]	70	\$36	\$509	\$48	\$12	\$1
8 Long Island Power Authority	2046 [36]	206	\$118	\$571	\$140	\$81	\$0
9 Los Angeles Dept. Water & Power	⁽⁴⁾ 2024-2027 [15]	221	\$129	\$584	\$150	\$118	\$0
11 Massachusetts Muni Power	2026-2045 [21]	199	\$105	\$527	\$135	\$65	\$2
12 Municipal Electric Authority-GA	2034-2049 [33]	819	\$506	\$618	\$557	\$316	\$0
13 Nebraska Public Power District	⁽⁵⁾ 2034 [23]	770	\$575	\$747	\$575	\$484	\$0
14 N. Carolina Eastern Muni Power Agency	2034-2046 [28]	490	\$288	\$588	\$333	\$207	\$2
15 N. Carolina Electric Corp.	2043 [33]	694	\$295	\$425	\$472	\$135	\$5
16 North Carolina Muni Power	2043 [33]	847	\$461	\$545	\$576	\$253	\$1
17 New York Power Authority	⁽⁶⁾ 2015-2034 [14]	1,877	\$1,065	\$567	\$1,276	\$1,032	\$0
18 Oglethorpe Power	2034-2049 [32]	1,199	\$751	\$626	\$815	\$266	\$0
19 Old Dominion Electric Co-op	2038-2040 [29]	210	\$99	\$473	\$143	\$98	\$0
20 Omaha Public Power District	2033 [23]	482	\$674	\$1,398	\$674	\$322	\$0
21 Orlando Utilities Commission	2036-2043 [31]	64	\$34	\$523	\$44	\$49	\$0
22 Piedmont Muni Power Agency	2043 [33]	282	\$154	\$545	\$192	\$57	\$0
23 Riverside Public Utilities	2022 [12]	38	\$41	\$1,076	\$41	\$66	\$2
24 Salt River Project	⁽⁷⁾ 2024-2027 [15]	677	\$359	\$530	\$460	\$211	\$8
25 Southern California Public Power	⁽⁴⁾ 2024-2027 [15]	229	\$121	\$530	\$156	\$162	\$4
26 South Carolina Public Power	2042 [32]	322	\$179	\$556	\$219	\$166	\$0
27 South Mississippi Electric	2022 [12]	127	\$61	\$480	\$86	\$39	\$0
28 Tennessee Valley Authority	2020-2036 [20]	6,671	\$3,228	\$484	\$4,536	\$1,014	\$21
Public Power Total		19,540	\$11,695	\$599	\$14,264	\$6,107	\$57

Nuclear 

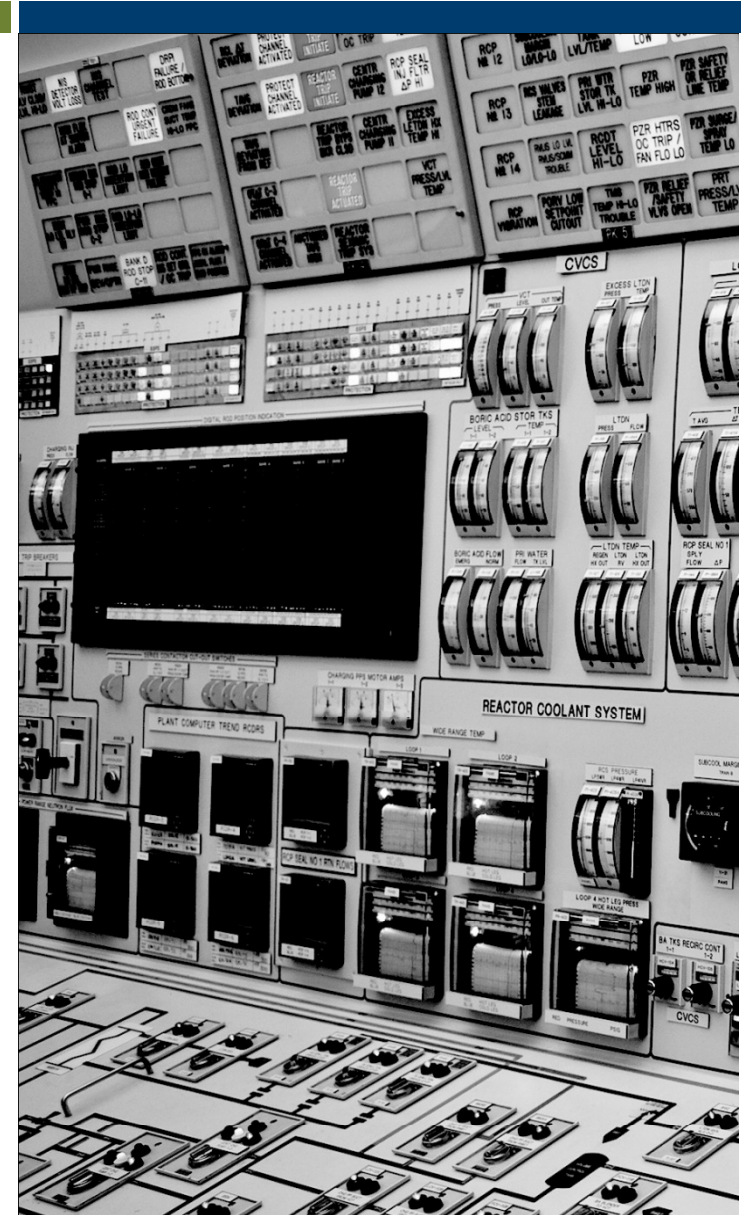
Decommissioning
Funding Study 2010

Disclaimer: All information is based on reliable sources, however accuracy and completeness of data cannot be guaranteed. Source information is contained on pg 4.

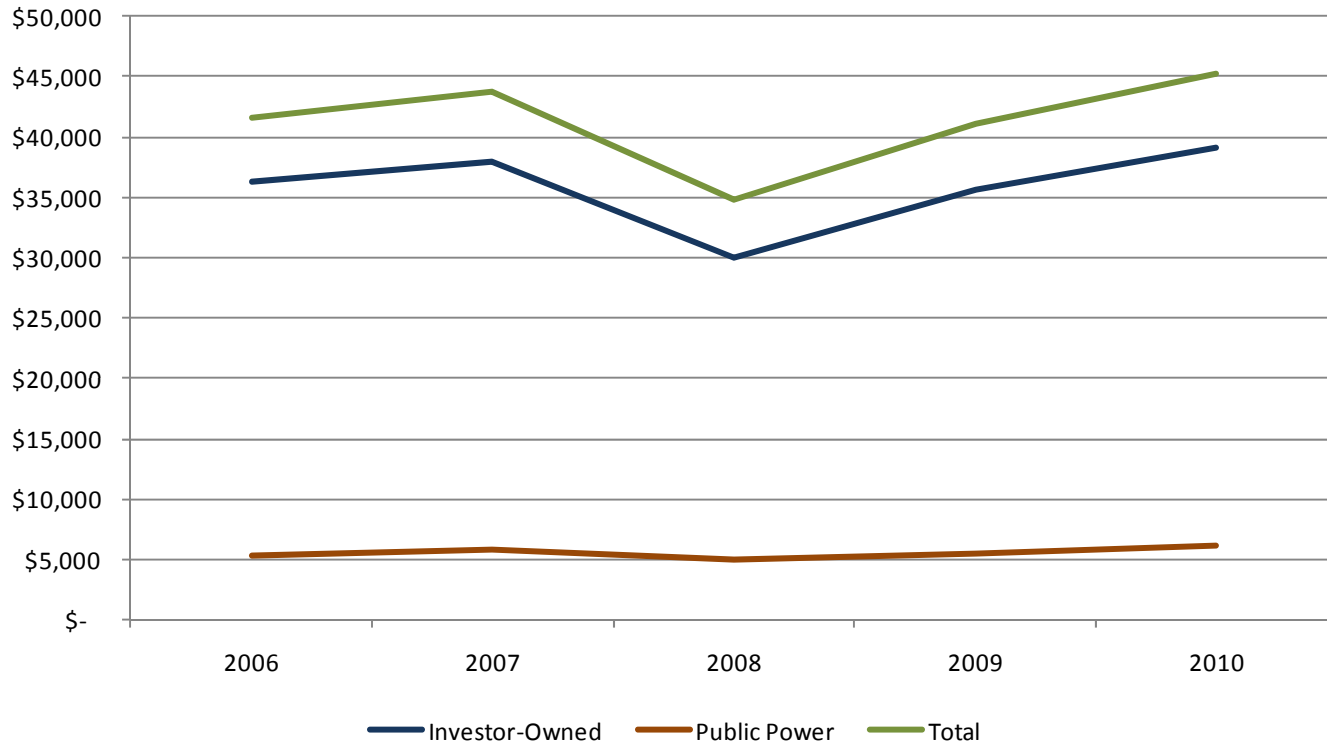




- (1) Fund Balance includes \$32.0 mm Internal Reserve
- (2) Fund Balance at 9/30/10
- (3) Fund Balance includes \$12.3 mm Internal Reserve
- (4) Fund Balance at 6/30/10
- (5) Fund balance includes \$2.0 mm Internal Reserve
- (6) Sold its interest in Indian Point 3 & James A. Fitzpatrick on 11/12/00 to Entergy but has retained the plant's NDT Fund until license expiration.
- (7) Fund Balance as of 4/30/10

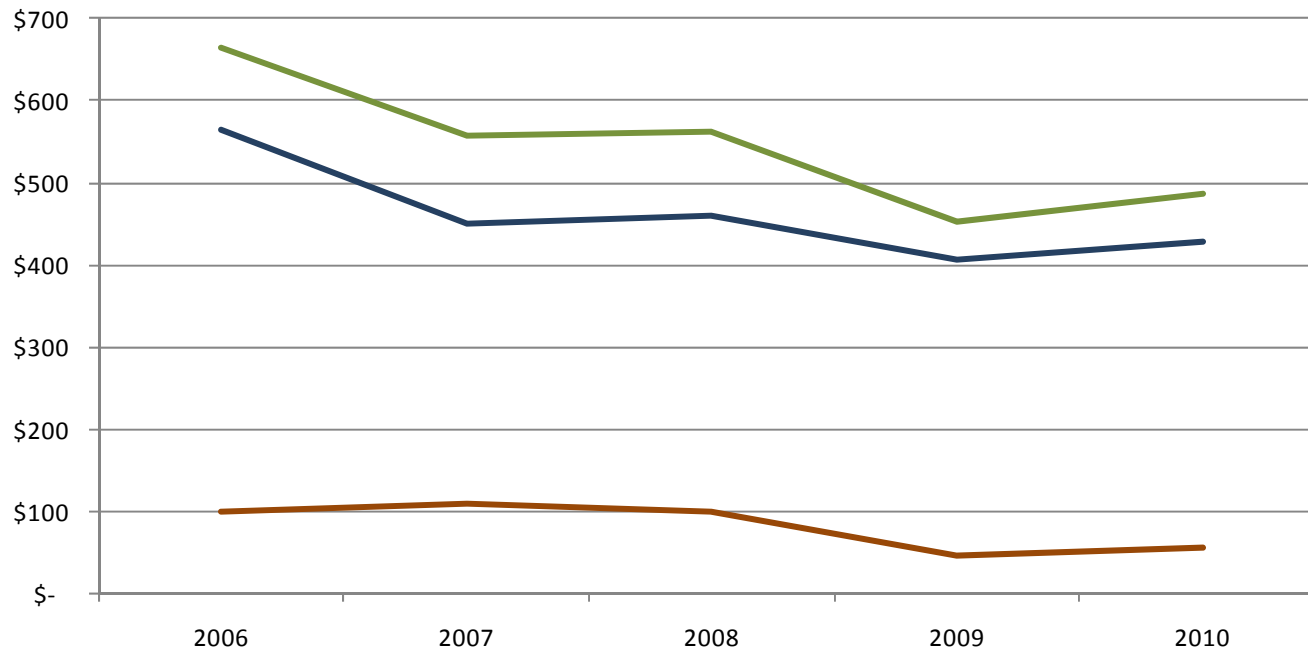


NDT Fund Balances (\$ millions)



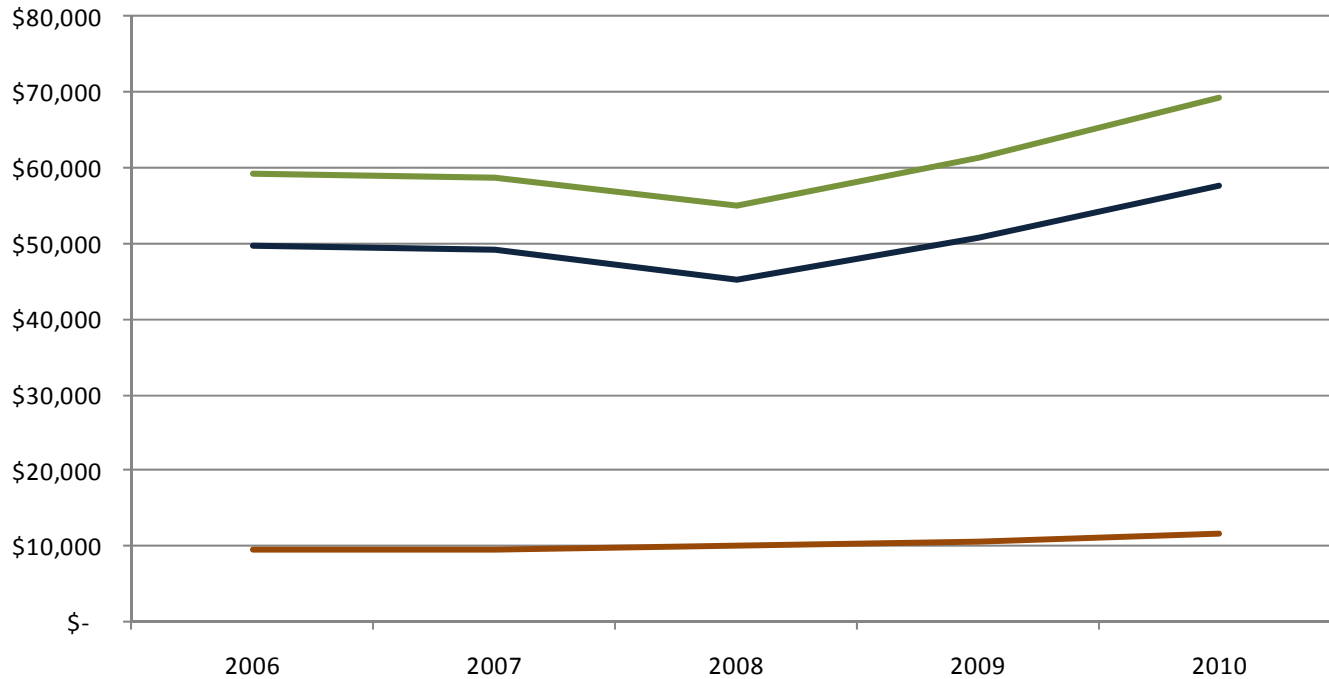
	2006	2007	2008	2009	2010
Investor-Owned	\$ 36,289	\$ 38,012	\$ 29,960	\$ 35,659	\$ 39,091
Public Power	\$ 5,270	\$ 5,778	\$ 4,926	\$ 5,462	\$ 6,107
Total	\$ 41,559	\$ 43,790	\$ 34,886	\$ 41,121	\$ 45,198

Annual Contributions to NDT Funds (\$ millions)



	Investor-Owned		Public Power		Total	
	2006	2007	2008	2009	2010	
Investor-Owned	\$ 564	\$ 449	\$ 461	\$ 407	\$ 429	
Public Power	\$ 100	\$ 109	\$ 101	\$ 46	\$ 57	
Total	\$ 664	\$ 558	\$ 562	\$ 453	\$ 486	

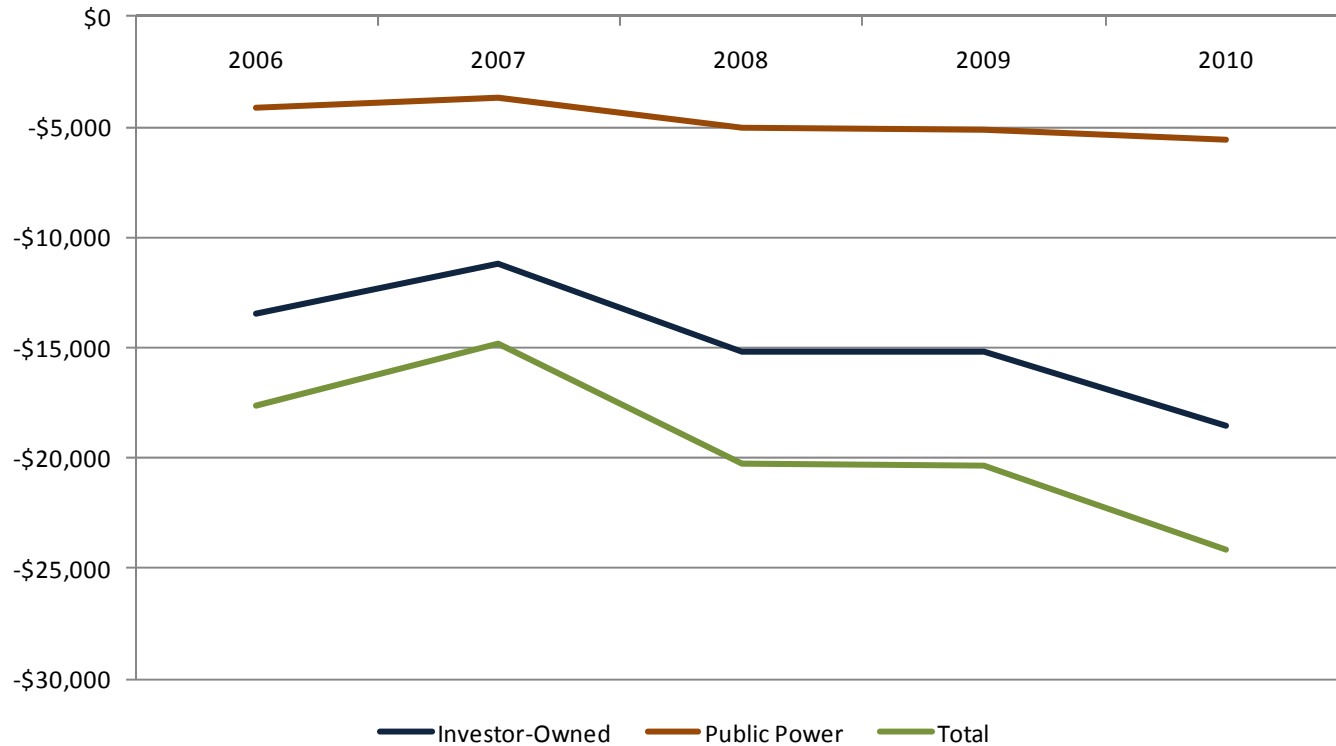
Cost Estimates of Decommissioning in Current Dollars (\$ millions)



	2006		2007		2008		2009		2010	
Investor-Owned	\$	49,785	\$	49,170	\$	45,142	\$	50,831	\$	57,657
Public Power	\$	9,419	\$	9,484	\$	9,959	\$	10,620	\$	11,695
Total	\$	59,204	\$	58,654	\$	55,101	\$	61,451	\$	69,352

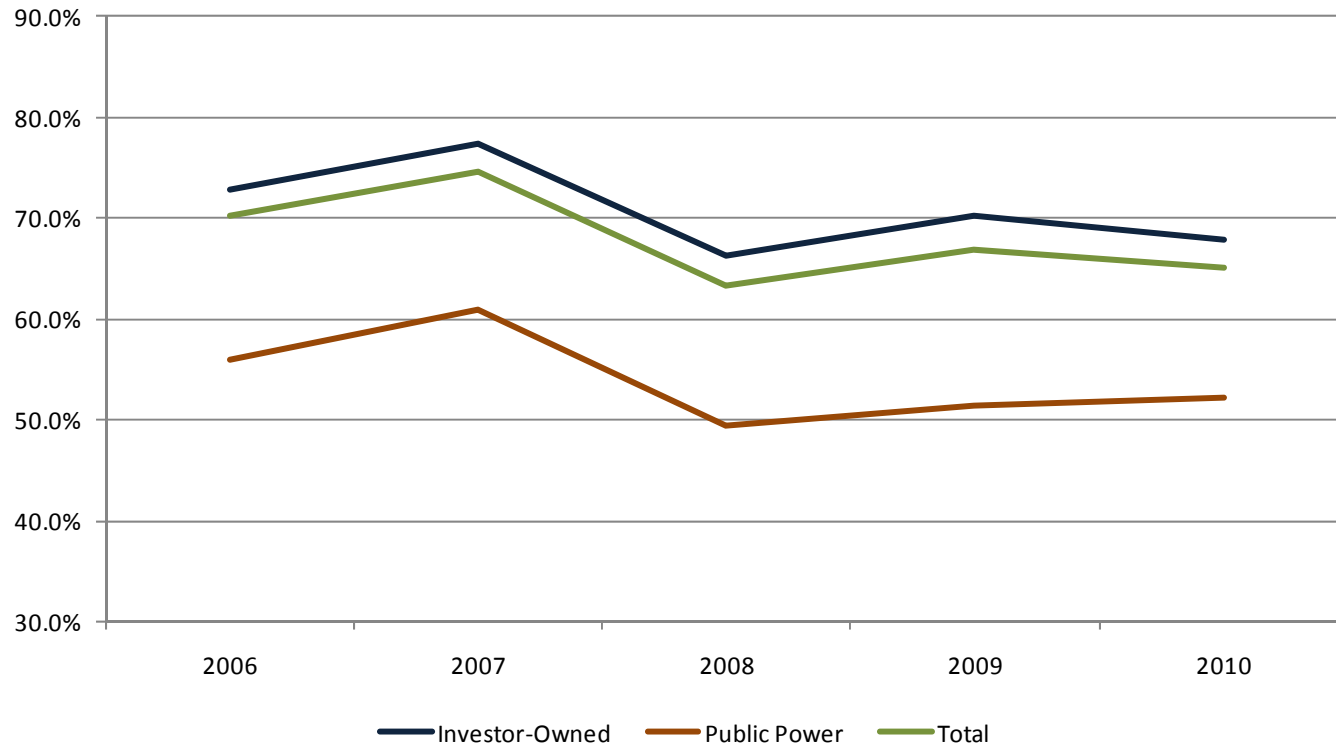
❖ The cost estimate of decommissioning is based on either a site-specific study or the NRC minimum cost formula.

Decommissioning Funding Status - Assets Less Costs (\$ millions)



	2006	2007	2008	2009	2010
Investor-Owned	\$ (13,496)	\$ (11,158)	\$ (15,182)	\$ (15,172)	\$ (18,566)
Public Power	\$ (4,149)	\$ (3,706)	\$ (5,033)	\$ (5,158)	\$ (5,588)
Total	\$ (17,645)	\$ (14,864)	\$ (20,215)	\$ (20,330)	\$ (24,154)

Decommissioning Funding Status (NDT Assets as Percent of Liability)



	2006	2007	2008	2009	2010
Investor-Owned	72.9%	77.3%	66.4%	70.2%	67.8%
Public Power	56.0%	60.9%	49.5%	51.4%	52.2%
Total	70.2%	74.7%	63.3%	66.9%	65.2%