

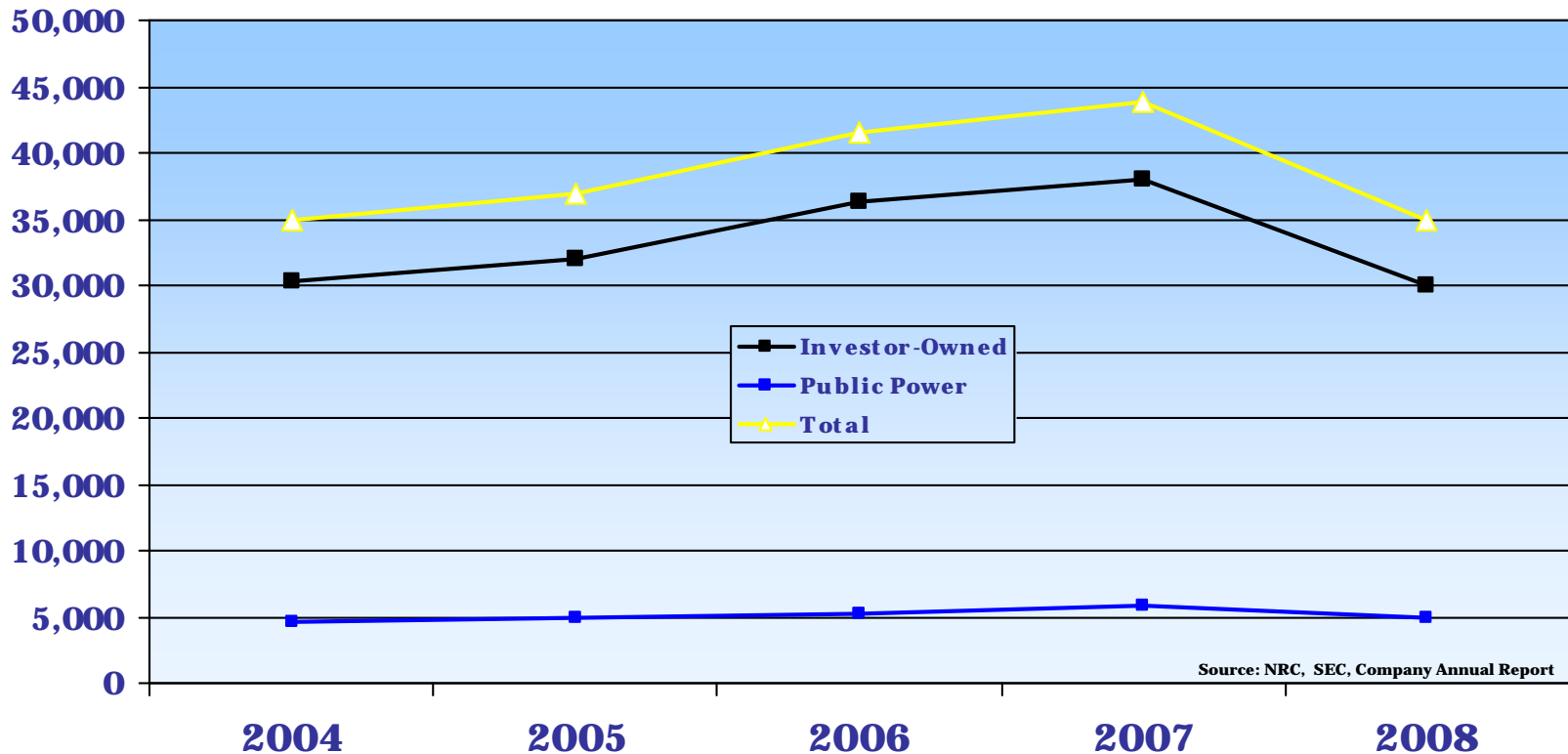
Nuclear Decommissioning Funding

Historical NDT Fund Balances, Annual Contributions and
Decommissioning Cost Estimates updated as of 12-31-08

 **Duff & Phelps**
Investment Management Co.



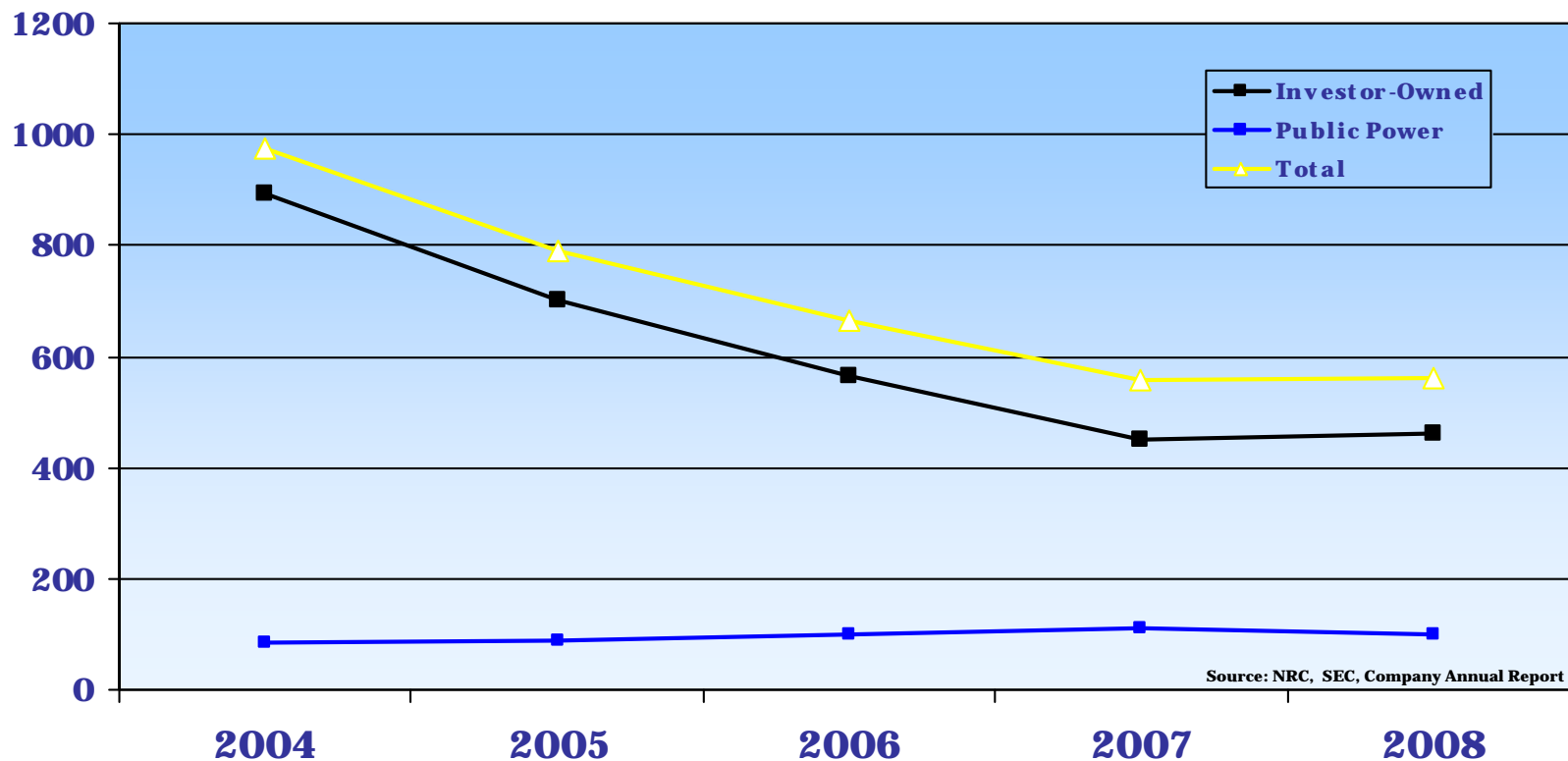
NDT Fund Balances (\$Millions)



	<u>2004</u>	<u>2005</u>	<u>2006</u>	<u>2007</u>	<u>2008</u>
<u>Investor-Owned</u>	30,355	32,061	36,289	38,012	29,960
<u>Public Power</u>	4,561	4,904	5,270	5,778	4,926
<u>Total</u>	34,916	36,965	41,559	43,790	34,886

Disclaimer: All information is based on reliable sources, however accuracy and completeness of data cannot be guaranteed.

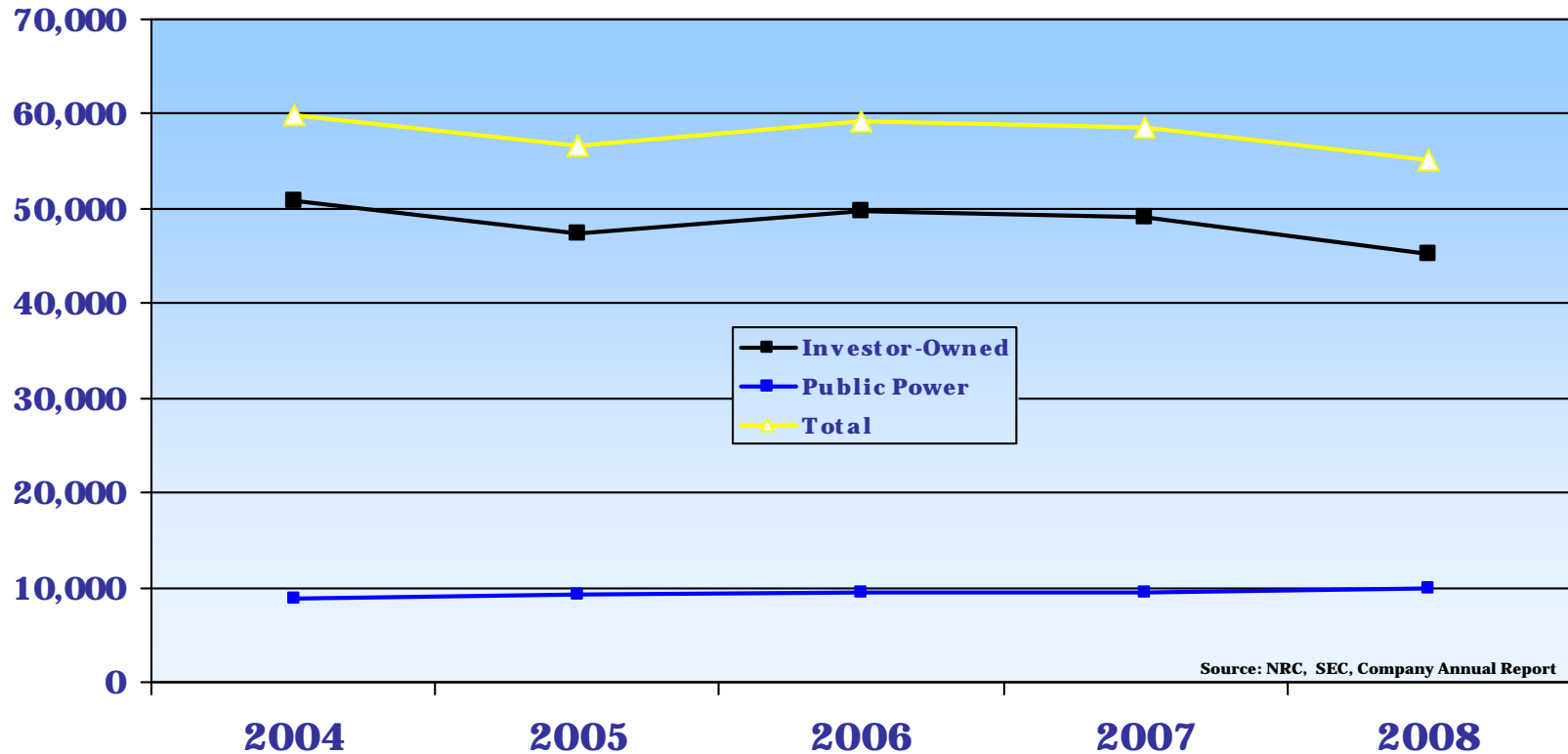
Annual Contributions to NDT Funds (\$Millions)



	<u>2004</u>	<u>2005</u>	<u>2006</u>	<u>2007</u>	<u>2008</u>
Investor-Owned	892	703	564	449	461
Public Power	84	87	100	109	101
Total	976	790	664	558	562

Disclaimer: All information is based on reliable sources, however accuracy and completeness of data cannot be guaranteed.

Cost Estimates of Decommissioning in Current Dollars (\$Millions)



	<u>2004</u>	<u>2005</u>	<u>2006</u>	<u>2007</u>	<u>2008</u>
<u>Investor-Owned</u>	50,923	47,453	49,785	49,170	45,142
<u>Public Power</u>	8,851	9,278	9,419	9,484	9,959
<u>Total</u>	59,774	56,731	59,204	58,654	55,101

❖ The cost estimate of decommissioning is based on either a site-specific study or the NRC minimum cost formula.

Disclaimer: All information is based on reliable sources, however accuracy and completeness of data cannot be guaranteed.